

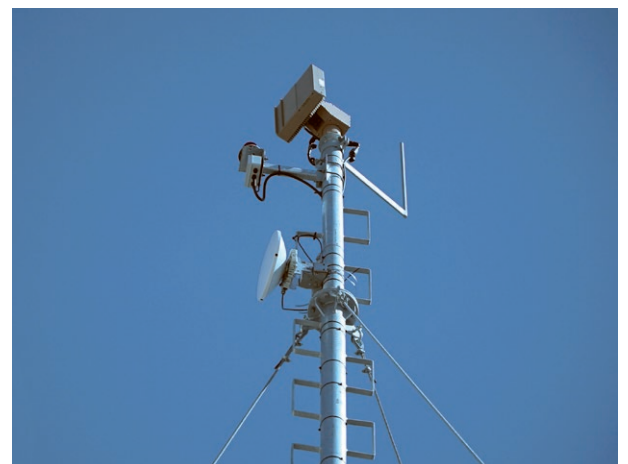
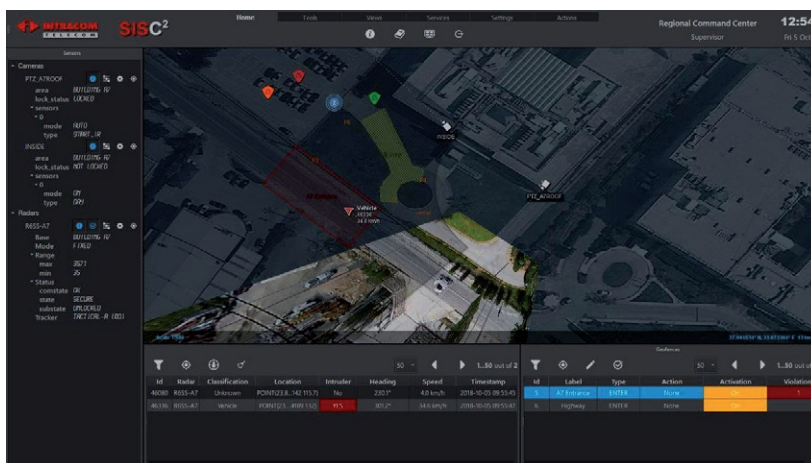
Overview

Intracom Telecom SISC² is a modular and scalable software integration platform for surveillance, collaboration, coordination and administration of diverse security and operations management related events. It is a comprehensive solution that gathers, processes, classifies and analyzes information received from several types of detection sensors and 3rd party applications to produce meaningful intelligence.

SISC² platform maximizes detection efficiency and operational effectiveness and timely produces situational awareness. It augments and expedites the operators' decision making process by offering decision support and optimizing operation and back-office and mission plans managing available resources and tasks.

Key Characteristics

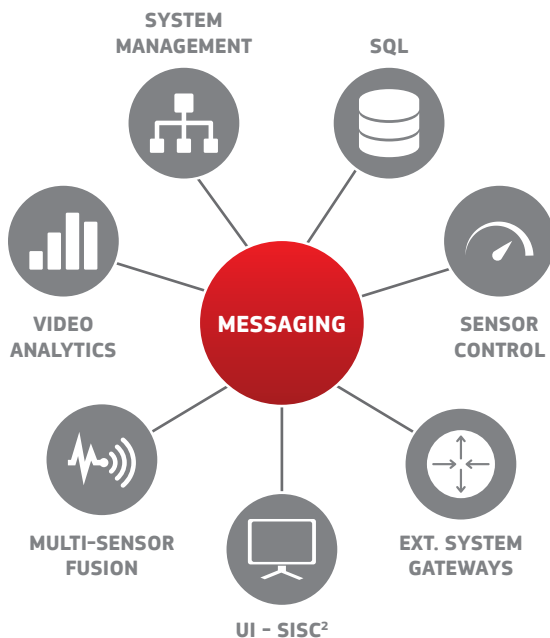
- Highly-intuitive human machine interfaces.
- Superior situational awareness providing 2D/3D dynamic maps and sensor data displays.
- Authentication & authorization with Role Based Access Control (RBAC).
- Multilingual user interface.
- Fully customized screen layouts with support for multi-monitor workstations.
- Modular design and extensive use of open protocols allows system to scale horizontally.
- High Availability ensures 24/7 operation and avoids single point of failure.
- Seamless integration with a variety of third party systems.



Modules

SISC² platform comprises functional modules ensuring:

- Composition of a common operations picture.
- Sharing of information and operational data between operators, echelons and organizations and establishing situational awareness.
- Video analysis and objects detection, classification and tracking.
- Integration for management and control of sensors and 3rd party application (e.g. radars, electro-optical, BMS, fire detection, intrusion detection systems, power monitoring, access controls, key management system, ESM, video recording and debriefing etc.).
- Track management and track fusion from multiple sensors.
- Incident management based on customized standard operating procedures and rules of engagement, with automatic escalation process and follow-up watchdogs.
- Decision support for all the steps followed in incident management.
- Resources management and tracking of own assets.
- Recording of all relevant information relating to incidents and operators actions for accountability, traceability and training purposes.



Functions & Features

- Multiple source data presentation in list views, tree views, table views and custom views.
- GIS integration:
 - 2D and 3D rendering capabilities for maps and sensor data.
 - Video stream projection on the map.
 - Seamlessly retrieves and projects raster and vector data either directly or from geographical databases.
- Map tools:
 - Measurement tools such as distance, area, angle, line of sight etc.
 - Feature insertion and management such as point of interest, area of Interest, areas of jurisdiction, alarming areas and boundaries etc.
- User and role management.
- Resource management including humans and assets.
- Rule-based alarm management from a graphical rule editor:
 - Integration of multiple alarm sources (geofence areas and boundaries, BMS etc.).
 - Alarm detection, prioritization, filtering and suppression.
 - Alarm notifications and programmable actions.
- Incident management with programmable standard operation procedures.
- Operator collaboration tools:
 - Chatting
 - Mobile SMS
 - E-mail
 - Voice over IP (VoIP)
 - Radio over IP (RoIP)
- Rich set of customized reports in various document formats such as PDF, EXCEL, TXT etc.
- Key performance indicators (KPI) and statistics.
- CPU and/or hardware accelerated video analytics:
 - Static or moving object detection, classification and identification.
 - Left and foreign object detection.
 - License plate recognition (LPR).
 - Face detection and identification.
- Multi-Sensor data fusion and track management system to integrate a wide variety of sensors and technologies (radar, EO/IR, CCTV, laser range finder, AIS tracks etc.) to enhance real-time situational awareness.
- Remote control of integrated sensors.

About Intracom Telecom

Intracom Telecom is a global telecommunication systems vendor operating for over 40 years in the market. The company has become the benchmark in fixed wireless access and it successfully innovates in the 5G/4G wireless fronthaul, backhaul and small-cell SON backhaul international arena. Intracom Telecom offers a comprehensive revenue-generating software solutions portfolio and a complete range of ICT services, focusing on IoT, SDN/NFV, Big Data analytics & data-driven intelligence, and Smart City solutions. It also addresses the Energy & Utilities industry, emphasizing on smart metering & end-to-end IT solutions. Intracom Telecom has extensive know-how and a proven track record serving more than 100 renowned customers in over 70 countries. The company operates subsidiaries in Europe, Russia/CIS, the Middle East and Africa, Asia and North America.